

5658 / 5659 Two & Three Way Centre Case Latch System

Features

- 2 or 3-point latch with flat rod connected to tapered slide bolts

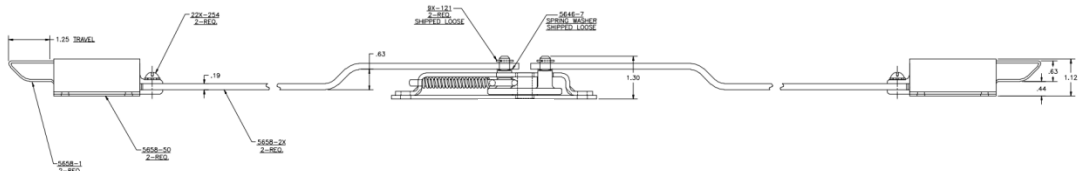
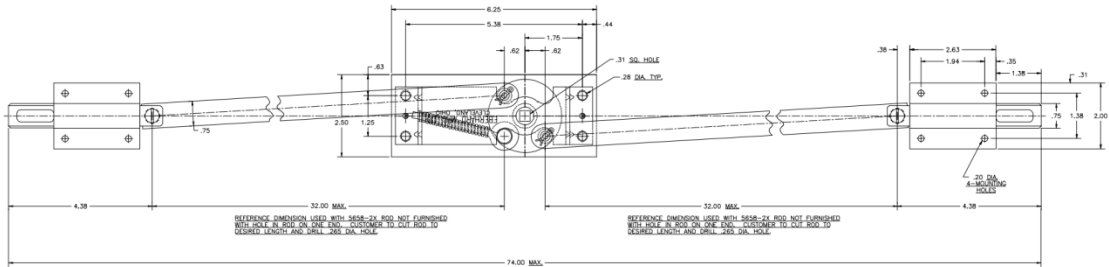
Material

- Steel, zinc plated

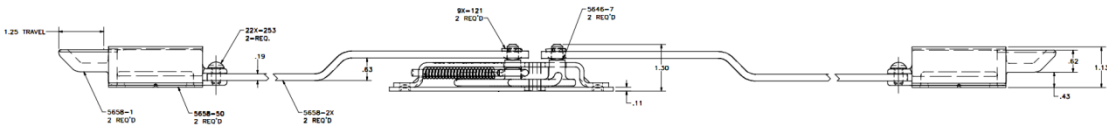
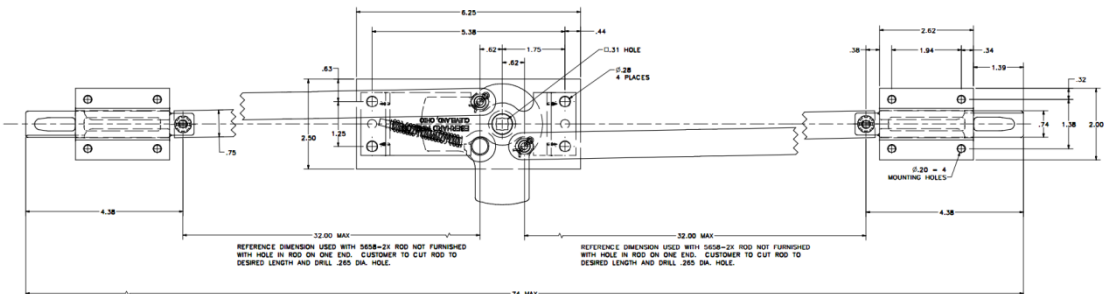
Notes

- Also available with malleable iron tumbler in centre case

BUDGET LATCHES & CENTRE CASES



5658-X82X shown (2 point system, with centre case, rods and end latches)



5659-X82X shown (2 point system, with centre case, rods and end latches)



5658-X82X
(3 point)

Part No.	Description	Centre Case Tumbler Material
5658-X82X	2 point centre case system, with rod and end latches	Zinc die cast
5658-82X	2 point centre case system, with rod and end latches	Malleable Iron
5659-X82X	3 point centre case system, with rod and end latches	Zinc die cast
5659-82X	3 point centre case system, with rod and end latches	Malleable Iron

Dimensions in inches

We are Eberhard's exclusive distributor

